

PRESS RELEASE

October 4, 2013

Chiyoda Invests in MPDC Gabon Co. Ltd.

Chiyoda Corporation (Chiyoda) (Head Office: Yokohama, President & CEO: Shogo Shibuya) (TSE: 6366, ISIN: JP3528600004) is pleased to announce that it has acquired 2,475 shares (equivalent to 25% of issued shares) of MPDC Gabon Co. Ltd. (hereinafter “MPDC”) from Mitsubishi Corporation.

MPDC holds participating interests in two offshore blocks in Republic of Gabon, including a 50% interest in Baudoroie Merou block and a 50% interest in Loche East block. Baudoroie Merou block has been operated stably and continuously since its first production in 1980 and it is expected that the revenue from this block will contribute to the stability of Chiyoda’s income. It is also planned to increase production in the other block, Loche East, by drilling a new production well in or after 2014.

Chiyoda announced in its medium-term management plan in May 2013 that it would prioritize “the expansion of its business fields to offshore and upstream projects” and “acceleration of investment” as its growth strategies. The investment in MPDC will promote these growth strategies.

Through investment in MPDC, Chiyoda expects to acquire knowledge of the needs for offshore and upstream industries. In addition, by integrating Chiyoda’s engineering capability with the specialized knowledge and expertise of Xodus Group (Holding) Ltd., with which we formed a strategic capital alliance in July 2013, Chiyoda will expand its business fields and will provide integrated services covering study, conceptual definition, Pre-FEED, FEED, construction and installation to enhance the value for customers in energy development projects.

<Company Profiles>

MPDC Gabon Co. Ltd

Name	MPDC Gabon Co. Ltd.
Representative	Kenichi Koyanagi, President and CEO
Location	3-1, Marunouchi 2-chome, Chiyoda-ku, Tokyo, 100-0005, Japan
Capital	495 million JPY (as of December 31, 2012)
Date of Establishment	February 1, 2001
Revenue	8,030 million JPY (Fiscal year ended December 31, 2012)
Business	Exploration, Production and Sale of Crude Oil produced by Baudoroie Merou block(Daily Production rate: about 6,500 bbl) and Loche East block(Daily Production rate: about 1,500 bbl) in Republic of Gabon

Mitsubishi Corporation

Name	Mitsubishi Corporation
Representative	Ken Kobayashi, President and CEO
Location	3-1, Marunouchi 2-chome, Chiyoda-ku, Tokyo, 100-8086, Japan
Capital	204 billion JPY (as of March 31, 2013)
Date of Establishment	April 1, 1950
Number of Employees	65,975 employees (as of March 31, 2013)
Business	Mitsubishi Corporation (MC) has seven business groups which develop operations in a diverse variety of fields including Industrial Finance, Logistics & Development; Energy; Metals; Machinery; Chemicals; Living Essentials; and Global Environment & Infrastructure. In addition to these business groups, MC has a business service group.

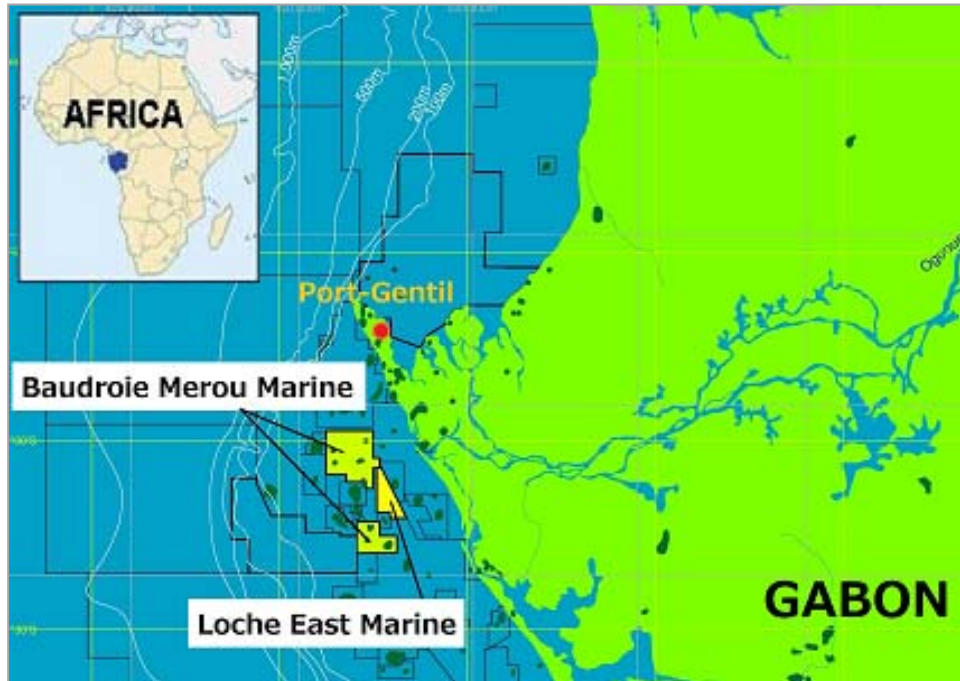
Chiyoda Corporation

Name	Chiyoda Corporation
Representative	Shogo Shibuya, President and CEO
Location	4-6-2, Minatomirai, Nishi-ku, Yokohama 220-8765, Japan
Capital	43 billion JPY (as of March 31, 2013)
Date of Establishment	January 20, 1948
Number of Employees	4,915 employees (as of March 31, 2013)

Business	Project & Program Management, Feasibility Studies, FEED, Engineering, Procurement, Construction, Commissioning, O & M and Asset Management
----------	--

<References>

Location of Baudroie Merou and Loche East block



Corporate structure of MPDC Gabon Co. Ltd. after Chiyoda's Participation

